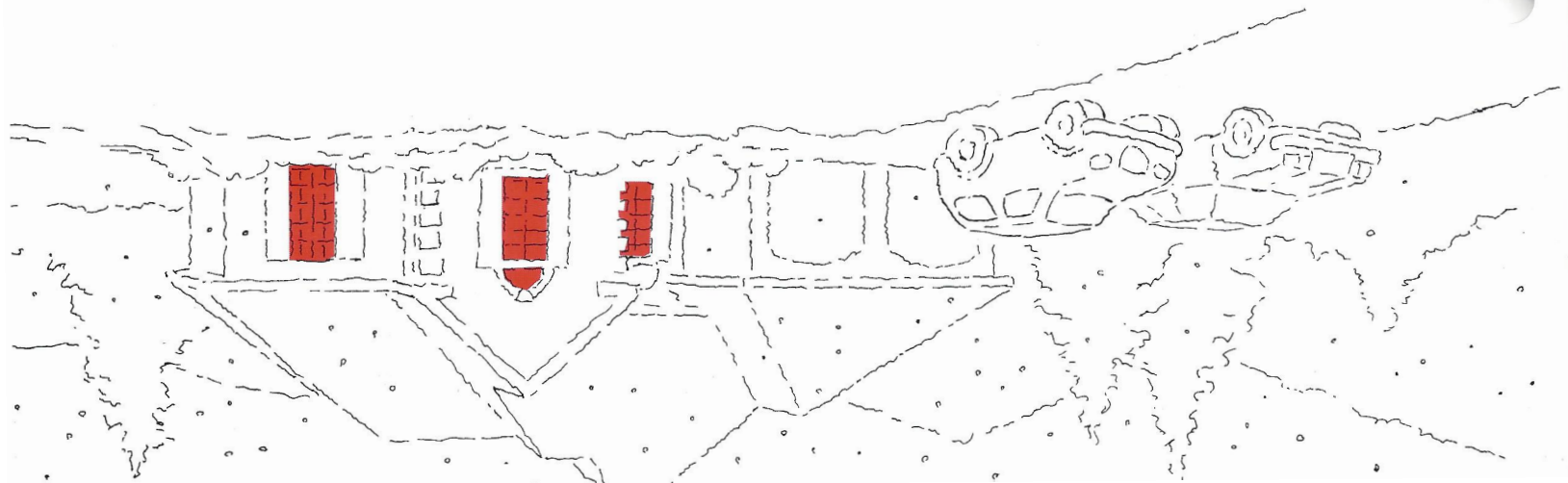


# How To Make Radiant Heat Better.

A GUIDEBOOK FOR  
INCREASING COMFORT,  
EFFICIENCY AND SIMPLICITY.



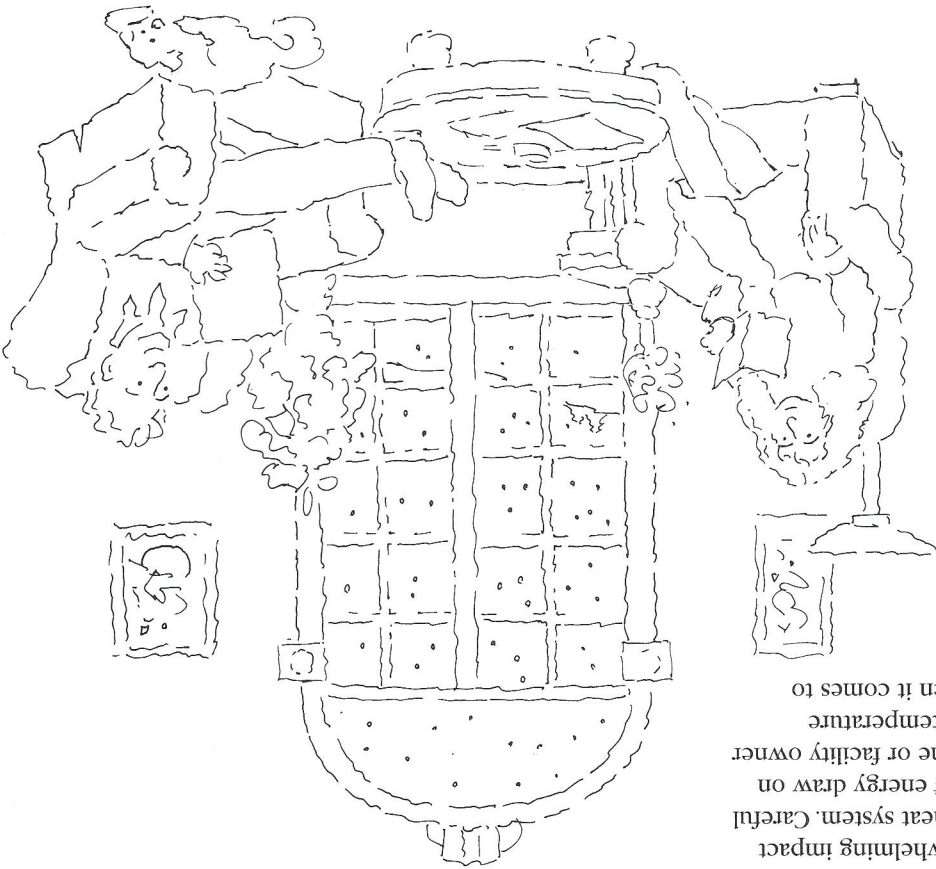
# Proper Radiant Heat Control Is Critical.

## RADIANT HEAT: A GOOD THING JUST GOT BETTER

Since the 1930's, Heat-Timer has been finding new ways to improve the comfort and efficiency of heating systems. We've taken what we've learned about controlling hydronic heating systems and applied it to the most favored type of hydronic heat of all: *Radiant*. Thanks to this comprehensive line of products, radiant heat is more comfortable, more efficient, and more reliable than ever before.

### CALL US.

If you have any questions about which of our controls could be used in your application, we are always available to discuss your project. Nor will our support end with your purchase. Call us for installation advice or information. And down the road, if a problem should arise, we will be here to help you solve it. Heat-Timer has been committed to customer satisfaction for over 60 years.



An investment in radiant heat is an investment in comfort. But without proper control, radiant heat can miss the mark when it comes to achieving *ultimate* comfort. Overheating, inefficiency, and slow reaction times can still occur unless a system is properly controlled. To avoid these and other problems, it's important that as much care is taken selecting the controls as the heating system itself.

### ACCURACY EQUALS COMFORT.

At Heat-Timer, we've designed a line of radiant heat controls that lets owners make the most of their radiant heat systems. While our controls are diverse enough to meet a wide range of applications, they all have one thing in common: *Accuracy*.

From simple set point controls to more elaborate hot water reset controls, all of our radiant products are designed to deliver superior accuracy. Because accurate temperature control *equals* comfort.

### ACCURACY EQUALS EFFICIENCY.

The proper control can have an overwhelming impact on the overall efficiency of a radiant heat system. Careful application of heat controls *evens out* energy drawn on the boiler. This not only saves the home or facility owner fuel, it preserves the boiler. Accurate temperature monitoring and control is critical when it comes to optimizing boiler performance.

### SIMPLICITY.

No one becomes a controls expert overnight. And no home or facility owner wants to undergo the rigors of on the job training. That's why all Heat-Timer controls are designed for easy installation and worry free operation. Most require little if any adjustment after start-up. And many can be installed on existing radiant heat systems.

# TABLE OF CONTENTS

<b>INTRODUCTION</b>	<b>2</b>
<b>SNOW MELT CONTROL (SMC)</b>	<b>4</b>
<b>RESIDENTIAL SNOW &amp; ICE MELT CONTROL (RSM)</b>	<b>6</b>
<b>HEAT-TROL® INDOOR/OUTDOOR RESET CONTROL</b>	<b>7</b>
<b>INJECTEMP® INJECTION SYSTEM</b>	<b>10</b>
<b>ZONE CONTROL PANEL</b>	<b>12</b>
<b>DIGI-SPAN® DIGITAL SET POINT CONTROL</b>	<b>14</b>
<b>TEMPERING VALVE</b>	<b>15</b>
<b>TEMPERATURE MONITORING CONTROL (TMC)</b>	<b>17</b>
<b>RADIANT HEAT MOTORIZED VALVES</b>	<b>18</b>

For more detailed product information, please contact...



20 NEW DUTCH LANE, FAIRFIELD, NEW JERSEY 07004 (201) 575-4004 • Fax (201) 575-4052  
INTERNET ADDRESS: <http://www.heat-timer.com>

